

If Windows does not install the drivers automatically, you must perform the installation manually.

In the system, in the USB controllers tab, select the device -> Properties -> Driver.

Choose to update the driver.

Then choose to search for a driver on your computer and select a driver from the list.

If you do not have FTDI directly in the manufacturer selection, select (Standard USB hubs) and on the right Model - General USB hub.

(in most cases it is not necessary to select a specific type and just enter the path to the driver as described below)

Click on install from disk and select the path about the driver from the folder papouch-usb-driver \ Old \ CDM 2.04.06 WHQL Certified.

Select the ftdibus.inf file and click OK.

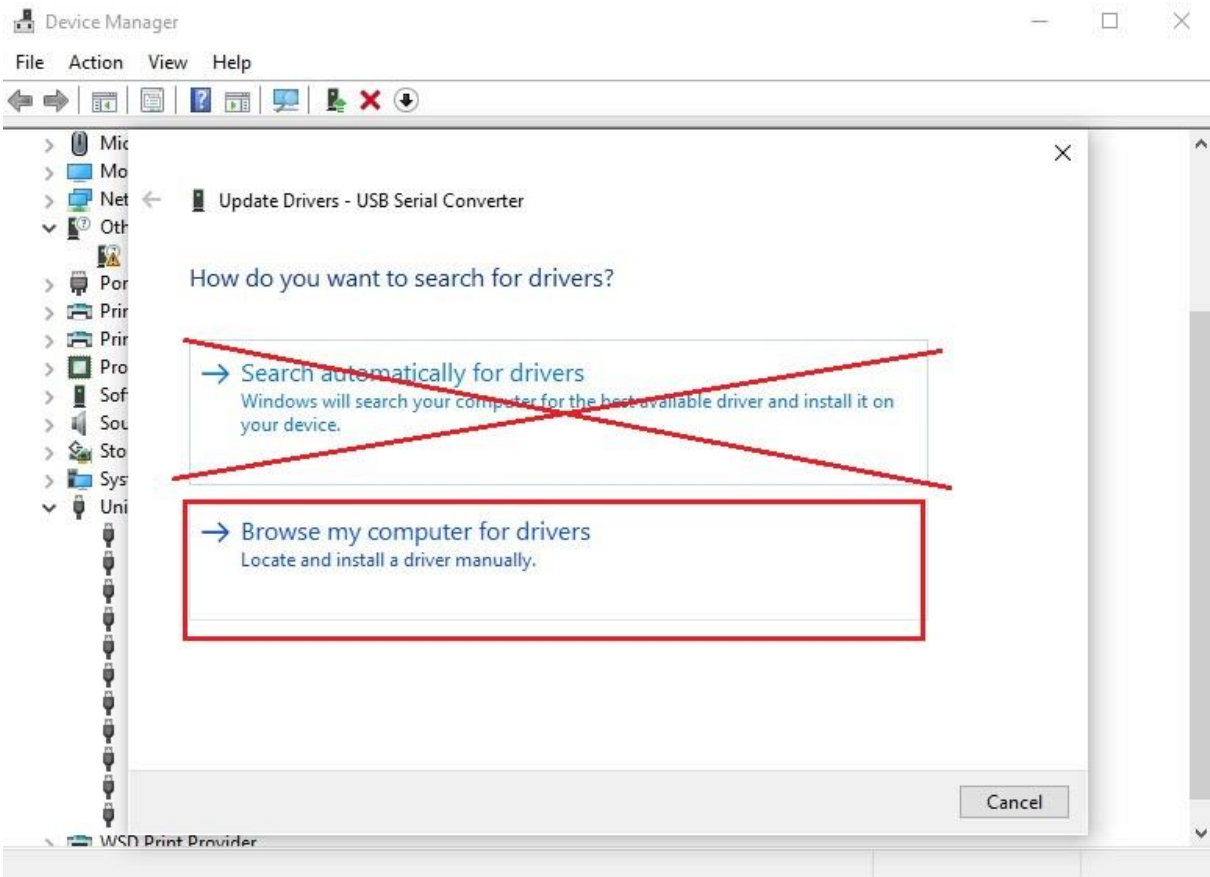
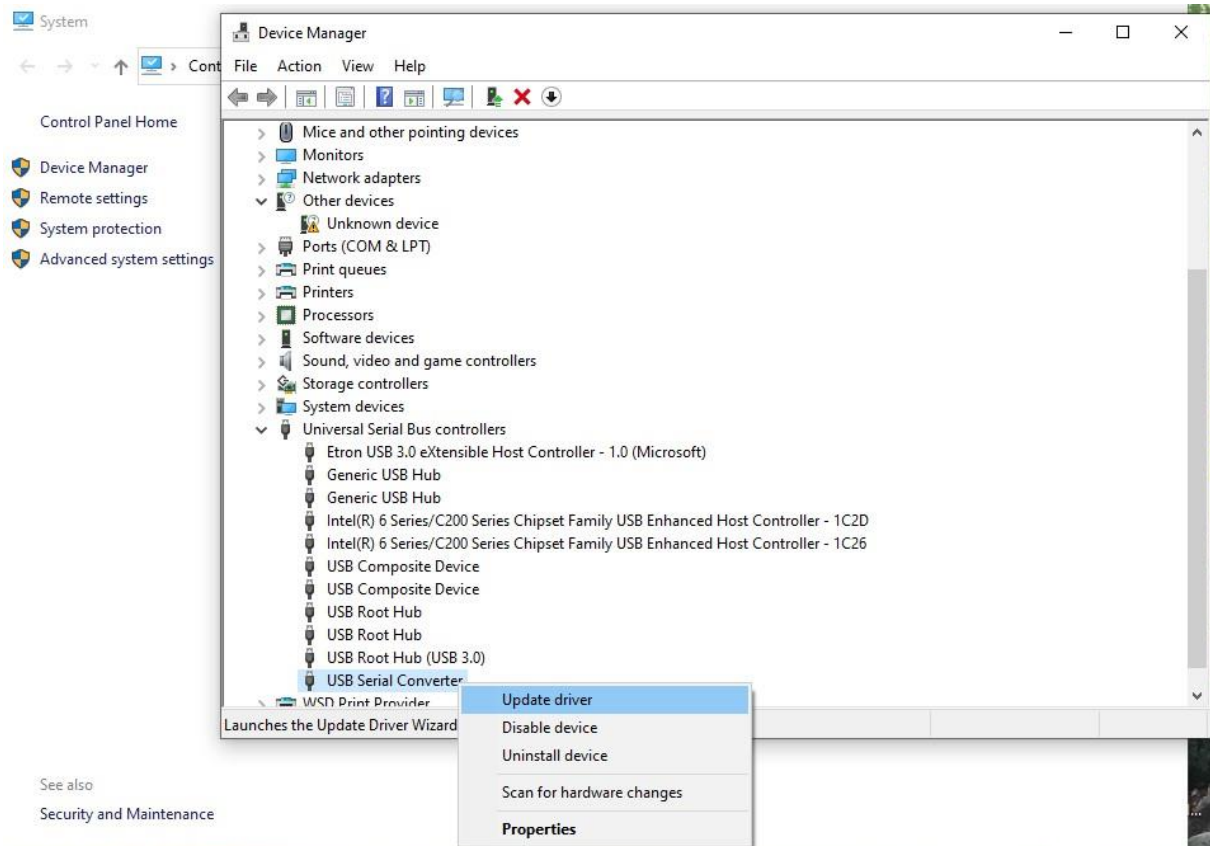
The USB driver should be installed at this time.

The same procedure is for installing a serial port if it is not installed at the same time.

The only difference is for the standard com port types (if the FTDI manufacturer is not available) and the communication port model are selected in the device selection for the virtual com port.

The file used is from the same folder but for the serial port is ftdiport.inf.

Here is picture guide to installation in 8 steps:



Update Drivers - USB Serial Converter

Browse for drivers on your computer

Search for drivers in this location:

Browse...

☒ Include subfolders

→ Let me pick from a list of available drivers on my computer
This list will show available drivers compatible with the device, and all drivers in the same category as the device.

Next

Cancel

Device Manager

File Action View Help



- > Mice and other pointing devices
- > Monitors
- > Network adapters
- ▼ Other devices
 - Unknown device
- > Ports (COM & LPT)
- > Print queues
- > Printers
- > Processors
- > Software devices
- > Sound, video and game controllers
- > Storage controllers
- > System devices
- ▼ Universal Serial Bus controllers
 - Etron USB 3.0 eXtensible
 - Generic USB Hub
 - Generic USB Hub
 - Intel(R) 6 Series/C200 Series USB 3.0 eXtensible
 - Intel(R) 6 Series/C200 Series USB 3.0 eXtensible
 - USB Composite Device
 - USB Composite Device
 - USB Root Hub
 - USB Root Hub
 - USB Root Hub (USB3.0)
 - USB Serial Converter
- > WSD Print Provider

Update Drivers - USB Serial Converter

Select the device driver you want to install for this hardware.



Select the manufacturer and model of your hardware device and then click Next. If you have a disk that contains the driver you want to install, click Have Disk.

☒ Show compatible hardware

Model

USB Serial Converter Version: 2.12.28.0 [8/16/2017]

USB Serial Converter Version: 2.4.6.0 [3/13/2008]



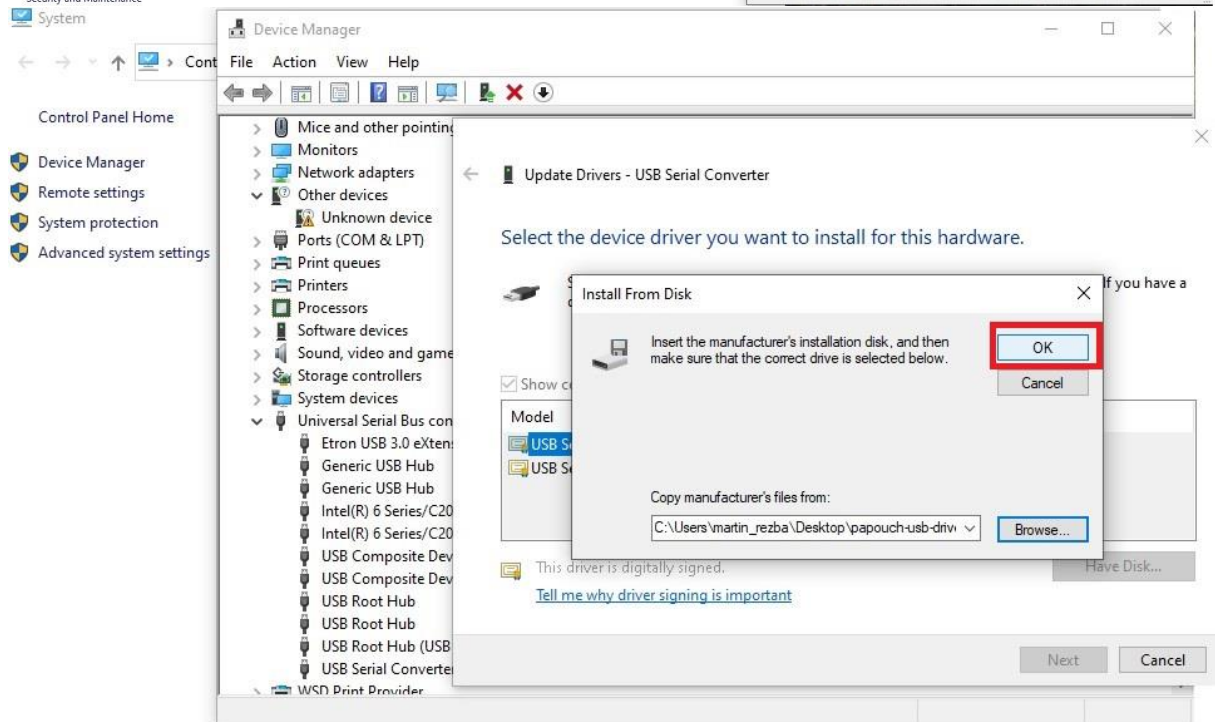
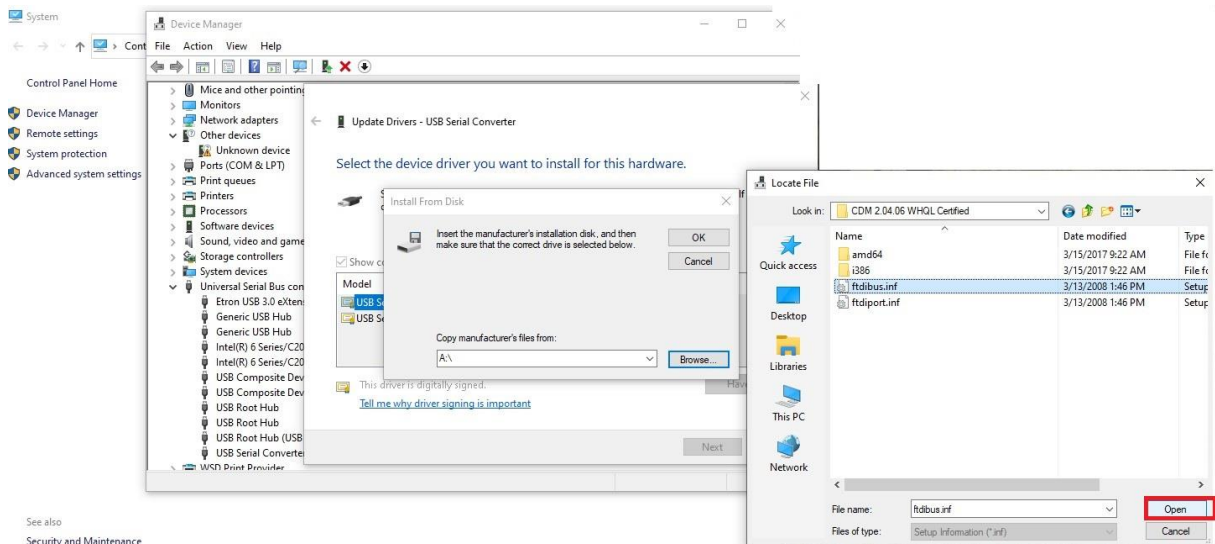
This driver is digitally signed.

[Tell me why driver signing is important](#)

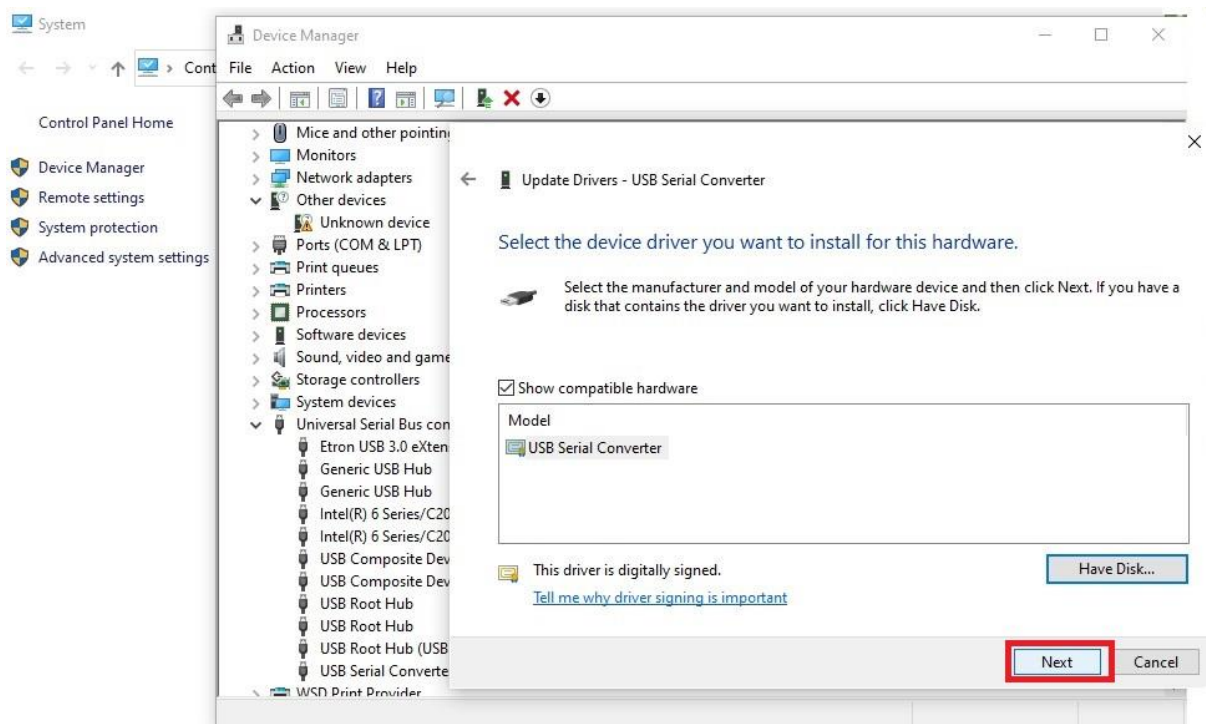
Have Disk...

Next

Cancel



See also
Security and Maintenance



See also
Security and Maintenance

